

# L-201 VLF PREAMPLIFIER

BY LF Engineering Co.

The L-201 is a broad band preamplifier for the VLF-LF spectrum covering 2 KHz to 500 KHz. A wide band linear device is used to insure low noise and ample gain throughout the spectrum.

This preamplifier is designed for use with shorter antennas (40 to 70 ft.) to receive LF signals. A loop input is also provided where a tuned high impedance loop may be desired or a tuned circuit is desired. The L-201 also can be used to match long wire antennas to 50 ohm converters and eliminate use of an LF tuner.

Static discharge protection is provided at the (Ant) input for moderate discharges (short of direct lightning strikes). The L-201 requires a NEDA 1604 or equivalent standard 9 volt transistor battery. Remove the 4 screws on the top panel to install the battery to the battery clip.

## INSTALLATION

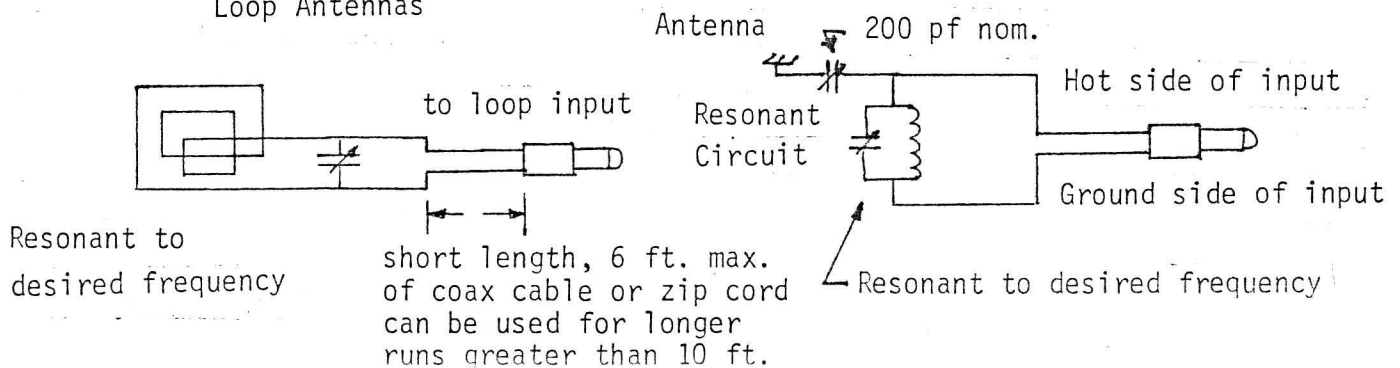
Connect the VLF preamplifier RF OUT to your existing converter or LF receiver's input with coax or shielded cable. Connect your receiving antenna to the RCA jack ANT input. Gain is factory set nominally at 20 dB. You can adjust this level at the gain access hole provided on the front panel, (use a small screwdriver or alignment tool).

## How To Get The Most Out Of Your Preamplifier

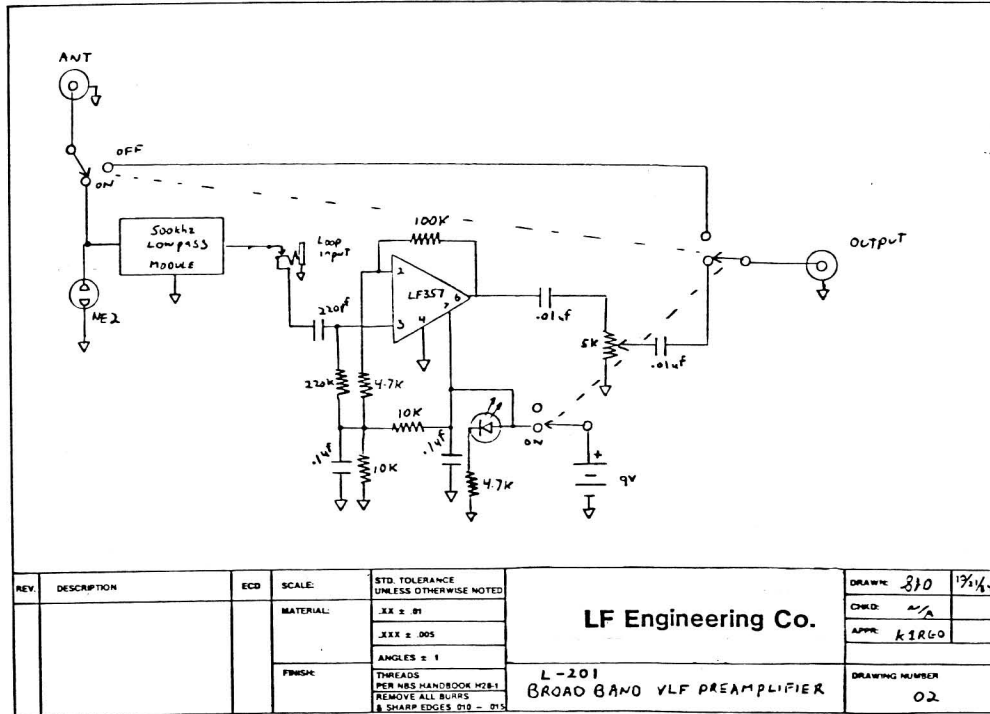
1. Front end overload and or intermodulation caused by strong low frequency signals or use of an antenna greater than 100 feet can be controlled by reducing the gain level on the L-201 and the RF gain on your receiver, or with a series tuned LC circuit in series with the antenna at the input of the preamp.
2. Noise from light dimmers and other man made EMI will be reduced using the L-201. The factory adjusted 20 dB gain setting is optimum when using an antenna 40 to 70 feet in length.
3. Connect the antenna directly to the antenna input. Do not use long lengths of grounded coaxial cable (6 feet or less).
4. The 3.5mm jack provided is for loop antenna use. High impedance resonant loops are recommended.

Examples:

Loop Antennas



# LF Engineering Co.



## SPECIFICATIONS

Filter Band Pass: 2 kHz to 500 kHz ± 5 dB  
 Gain: 25 dB max.  
 Voltage required: 9 volts DC  
 Input current: 6 ma

## WARRANTY

LF Engineering Co. warrants that, at the time of shipment the products manufactured by LF Engineering Co. are free from defects in material and workmanship. LF Engineering Co. obligation under this warranty is limited to replacement or repair of such products within 90 days from date of shipment.

Copyright 1985 by LF Engineering Co.  
All rights reserved.

LF Engineering Co. Inc.  
17 Jeffry Road  
East Haven, Conn.  
06512

Printed in U.S.A.